

WT-9001 GPRS Software Guide

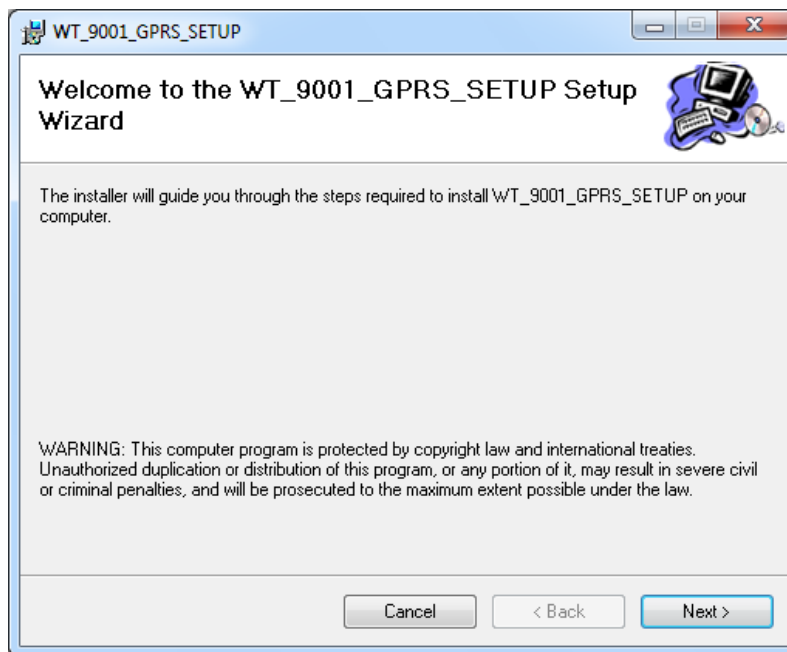
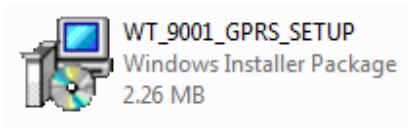
Note:

1. Information in this manual is subject to change without notice and does not represent a commitment of manufacturer.
2. Manufacturer shall not be liable for errors contained herein and incidental or consequential damages result from using this manual.
3. No part of the manual can be reproduced or publicized in any form or by any means.
4. All rights are reserved.

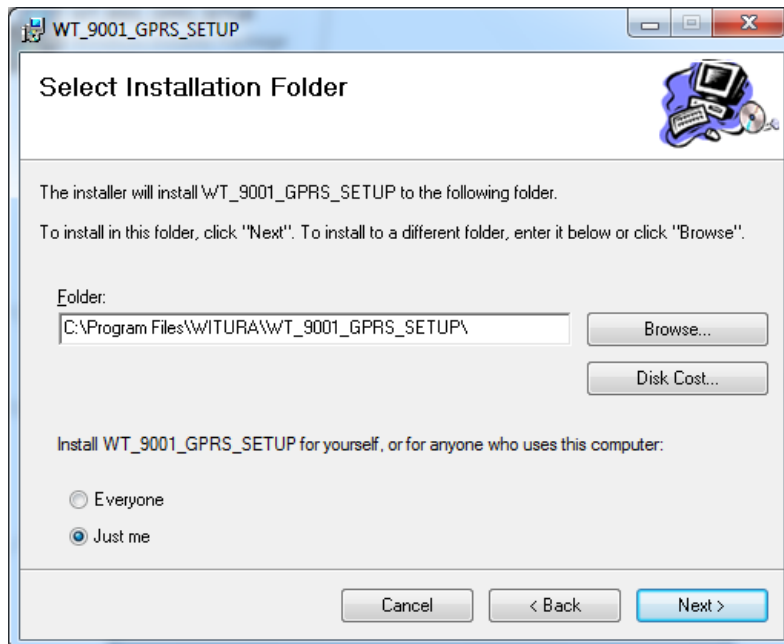
Installing the Software

Step 1: Insert the provided WT-9001 GPRS CD into your computer. You will find a folder named “WT-9001 GPRS Software”.

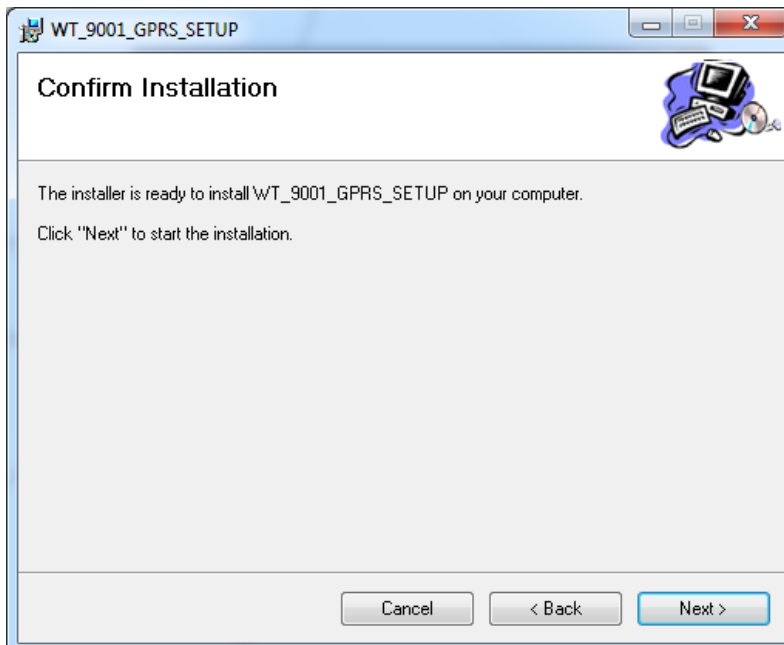
Step 2: Double click the “WT_9001_GPRS_SETUP” to begin installation

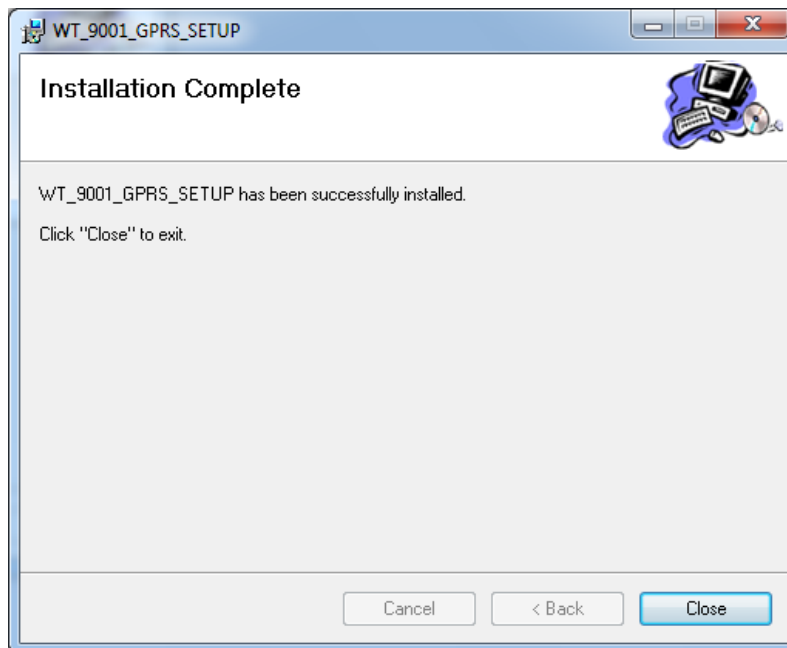
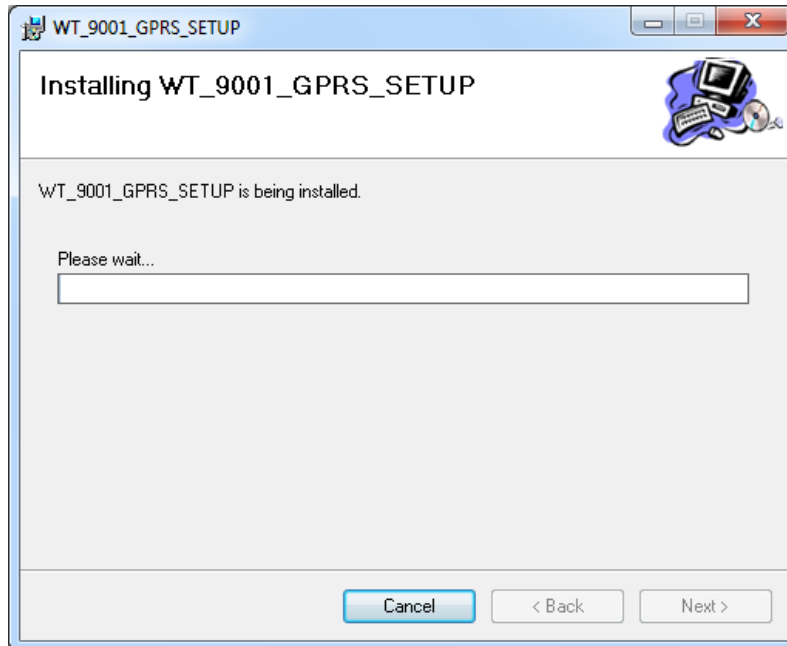


Step 3: Select Installation folder and press Next to continue



Step 4: Press Next to start installation.

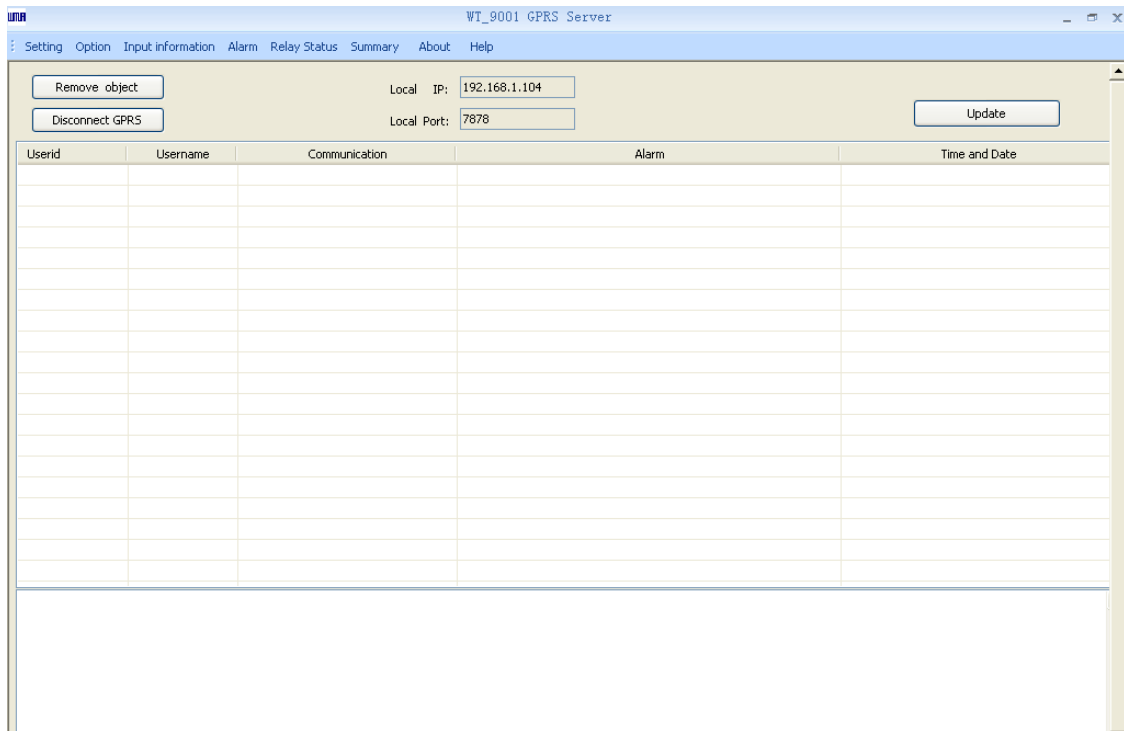
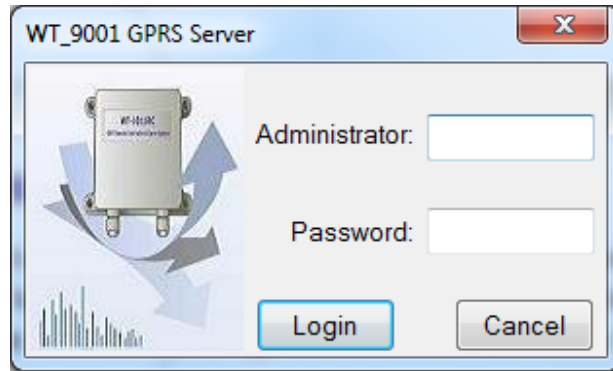




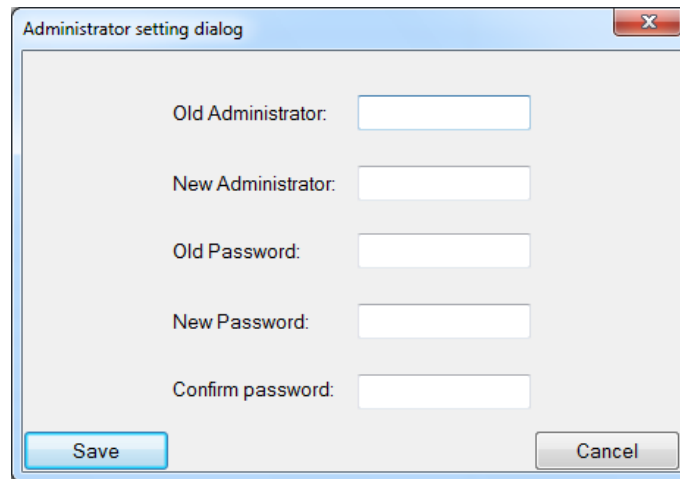
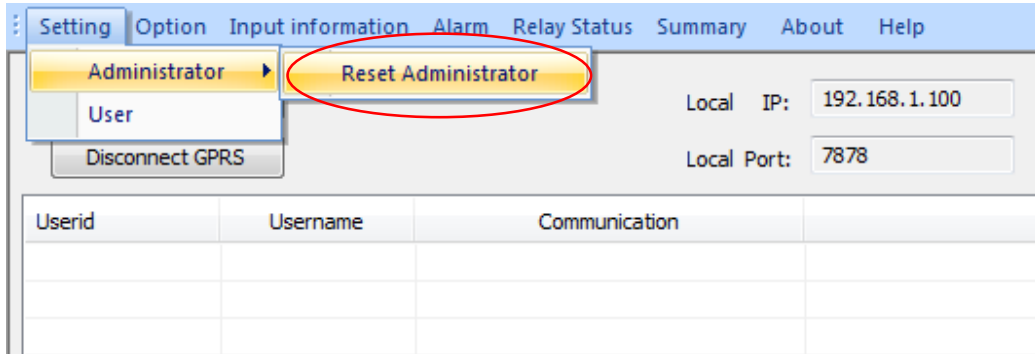
The WT-9001 GPRS software installed successfully.

Launch the WT-9001 GPRS Software

Step 5: Once finished setup, you will find a WT_9001_GPRS icon on your desktop. Double click on it to launch the software. When WT_9001_GPRS software is launched for the first time, there is a default Administrator ID "witura" and its default Password is "12345"

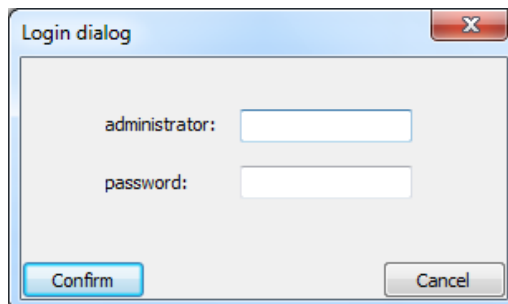


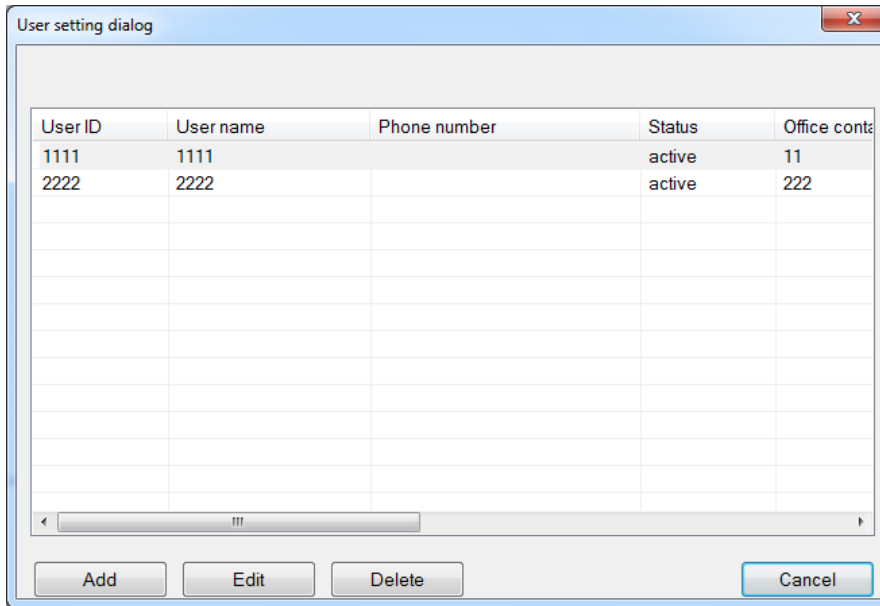
Step 6: Once logged into the system, you can change the Administrator ID and Password from the “Setting > Administrator > Reset Administrator” menu.



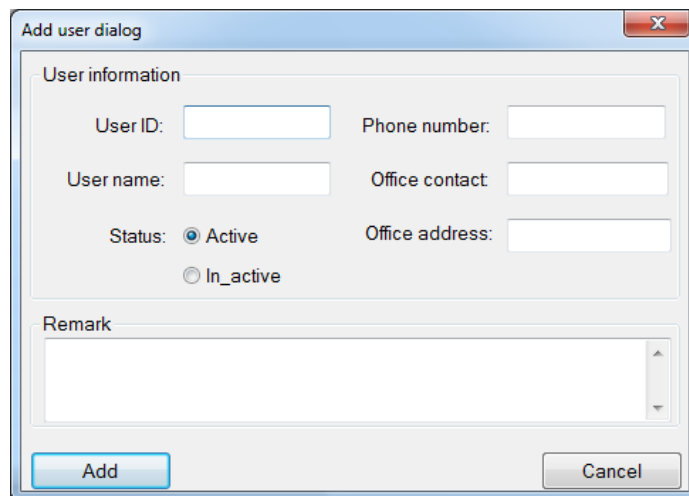
Step 7: Adding New Users

For the first step, add the organization user information by selecting “Setting > User”. A smaller window will pop out to prompt you to enter Administrator ID and Password.





To add a new user, simply click on "Add" button. The Administrator may enter User ID, User name, phone number (SIM number of WT-9001 device), contacts, status and other details here. Not all the users need to be in active status, i.e. for those inactive user contacts, they will be automatically disabled from the WT-9001 GPRS software.

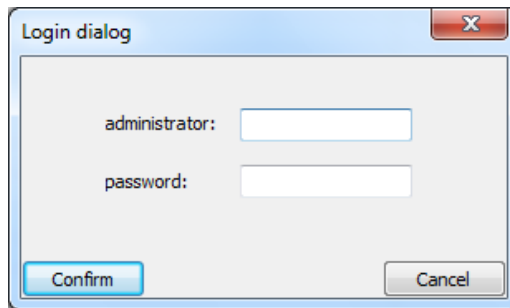
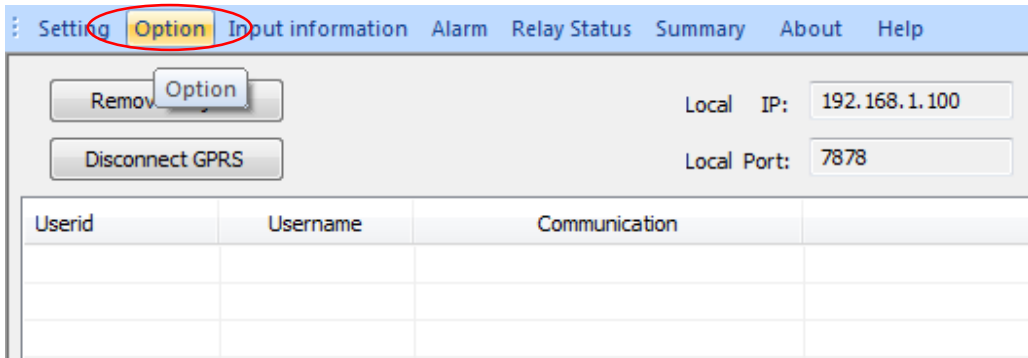


Once the administrator clicks the "Add" button, the user profile will be saved in the system database.

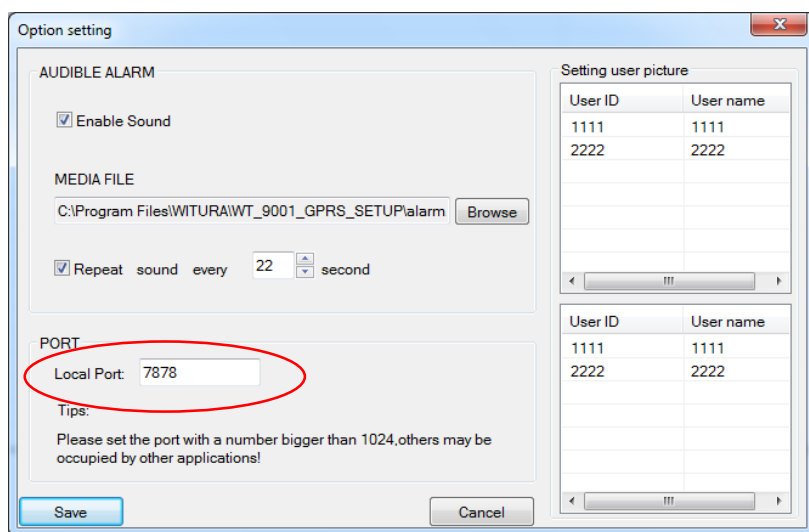
Note: The administrator may program the users as many as his/her HDD free space can support. The administrator may enter 4 digits numeric numbers only for User ID. The User ID must be the same with the User ID in the WT-9001 device.

Step 8: Setup the Connection Type and Port

To setup connection type and port, simply press "Option" menu. A smaller window will pop up as shown below.



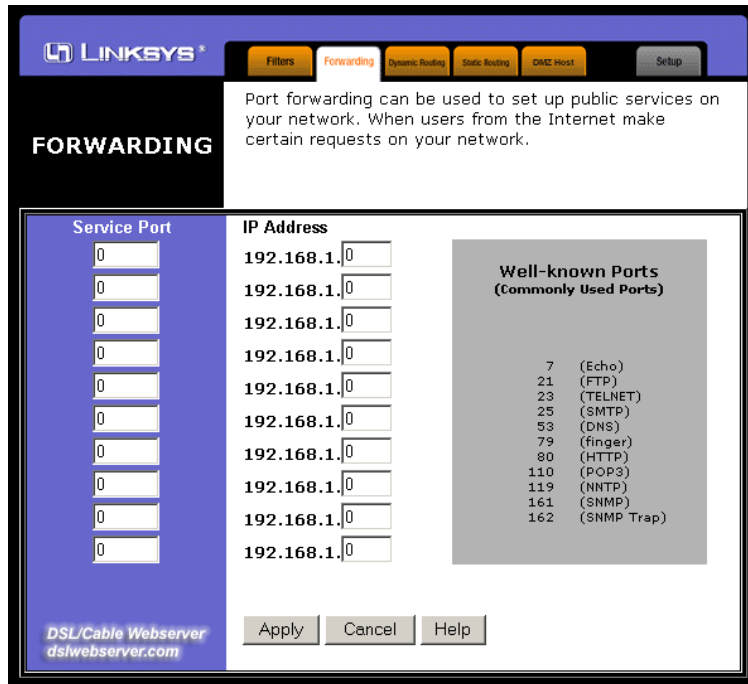
Enter Administrator ID and Password. When WT_9001 Server software is launched for the first time, there is a default Administrator ID "witura" and its default Password is "12345".



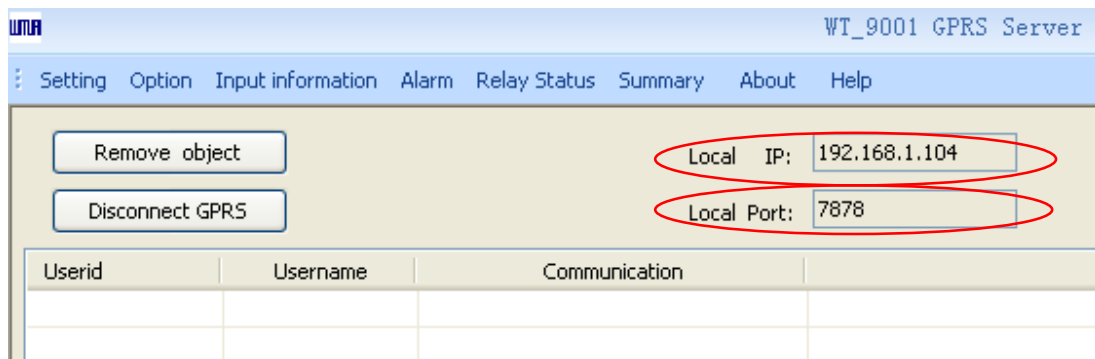
Setup a port number. Press "Save" button to save settings.

Step 9: Setup port forwarding for your router.

The WT_9001 GPRS software requires an opened port which allows instant connections and data transfer to the software. To do this, you can open up an internet browser and enter the standard IP for your router. Look for a tab with name like, "Port Forwarding" or "Applications and Gaming". Below is an example of Port Forwarding tab from a Linksys router.



In the "IP Address" field enter the IP address of your computer (Local IP). If your router asks you whether to ports for TCP or UDP select both. In the "Port" field enter the port number that you have created in the software. Some routers offer a from port number to port number, in this case enter the same number into both blanks.



Step 10: Connecting the WT-9001 Device to the GPRS Software

To setup a communication between the WT_9001 GPRS software and the WT-9001 unit, you need a GPRS enabled SIM card installed into the WT-9001 device and configure it as listed below:

1

Programming the Administrator Number

Text Command:

***TEL[N]#XXXXXXXXXX**

N stands for administrator number **1 - 20**

XXXXXXXXXX stands for the phone number you want to program as administrator.

Example:

To program phone number **1111222233** as administrator into list number **1**, you would send the following SMS command to the unit.

***TEL1#1111222233**

2

Programming the User ID

Text Command:

***USID#XXXX**

XXXX stands for 4 digits numeric numbers

Example:

To program User ID **1111** into the device, you would send the following SMS command to the unit.

***USID#1111**

3

Setup the GPRS Communication

Text Command:

***GSIP#"TTT","XXX.XXX.XXX.XXX","NNNN"**

TTT stands connection type "**TCP**"

XXX.XXX.XXX.XXX stands for External IP of your router

NNNN stands for Local Port number created from the WT_9001 GPRS Software

Example:

Assume that you have acquired the External IP address as **123.65.214.231**, port number **8765** and connection type: **TCP**, you would send the following SMS command to the unit.

***GSIP#"TCP","123.65.214.231","8765"**

4

Setup the APN of your SIM Card

Text Command:

***ANET#XXXXX...**

XXXXX... stands for Access Point Name

Example:

To configure the access point name **Vodanet**, you would send the following SMS command to the unit.

***ANET#Vodanet**

5

Turn On GPRS Connection

Text Command:

***GPRS#X**

X stands for ON (**1**) or OFF (**0**)

Example:

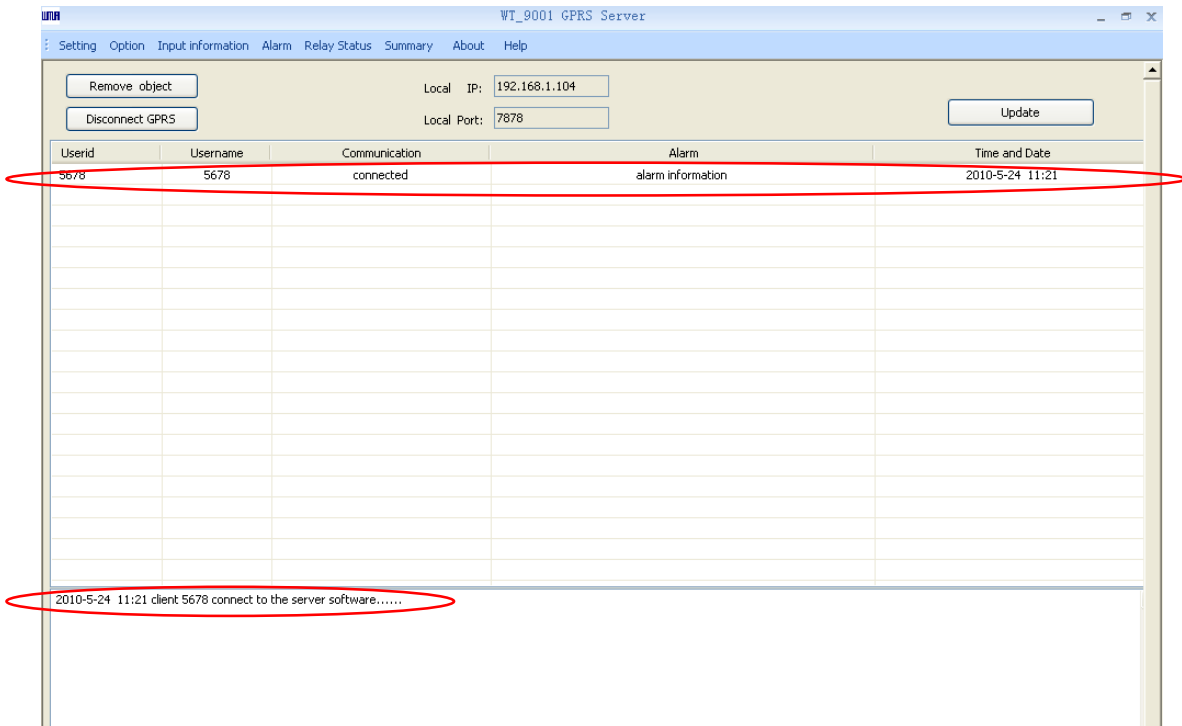
To turn on GPRS connection, you would send the following SMS command to the unit.

***GPRS#1**

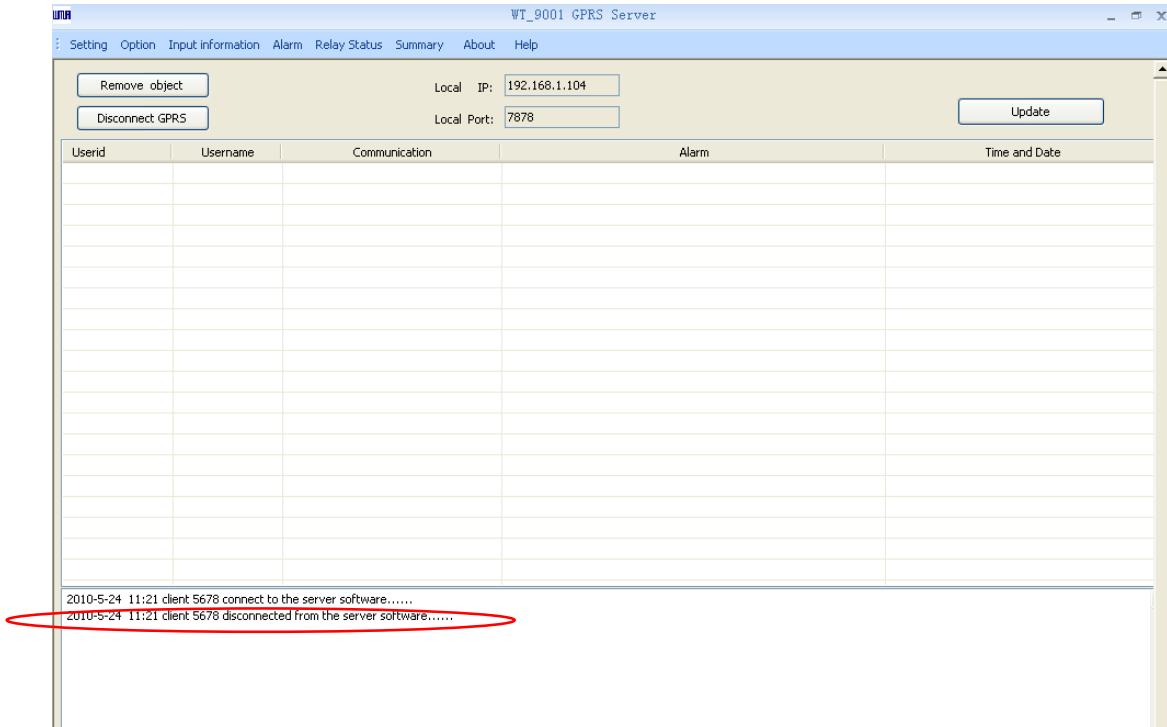
Note: It is advised that you should program all other functions before enabling the GPRS connection.

WT-9001 GPRS Software Version 1.1

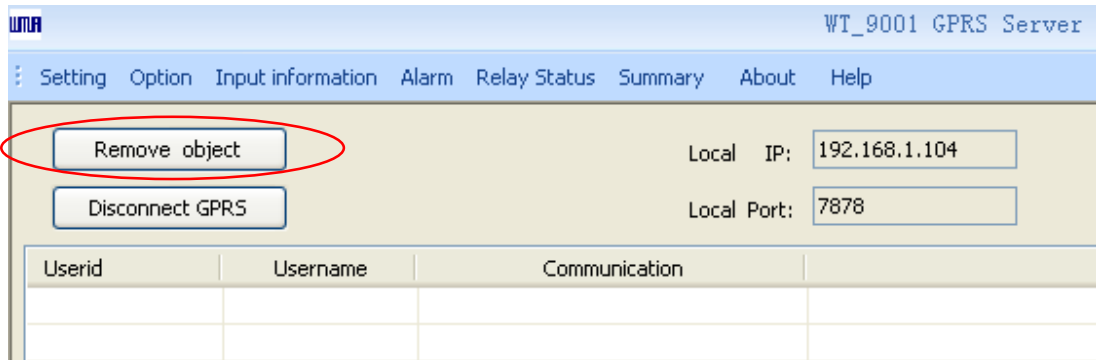
When the WT-9001 device connected to the WT_9001 GPRS software you shall see as below



When the WT-9001 device disconnected from the WT_9001 GPRS software you shall see as below

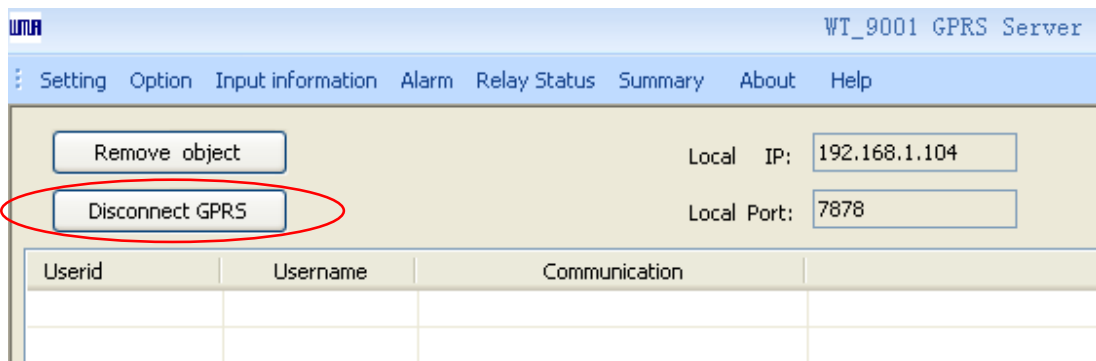


To manually remove the connected WT-9001 device from the GPRS software, you could press the “Remove object” button



Note: Removing the connected WT-9001 device from the list does not permanently disconnect the WT-9001 device. The WT-9001 device will still connect to the GPRS software again.

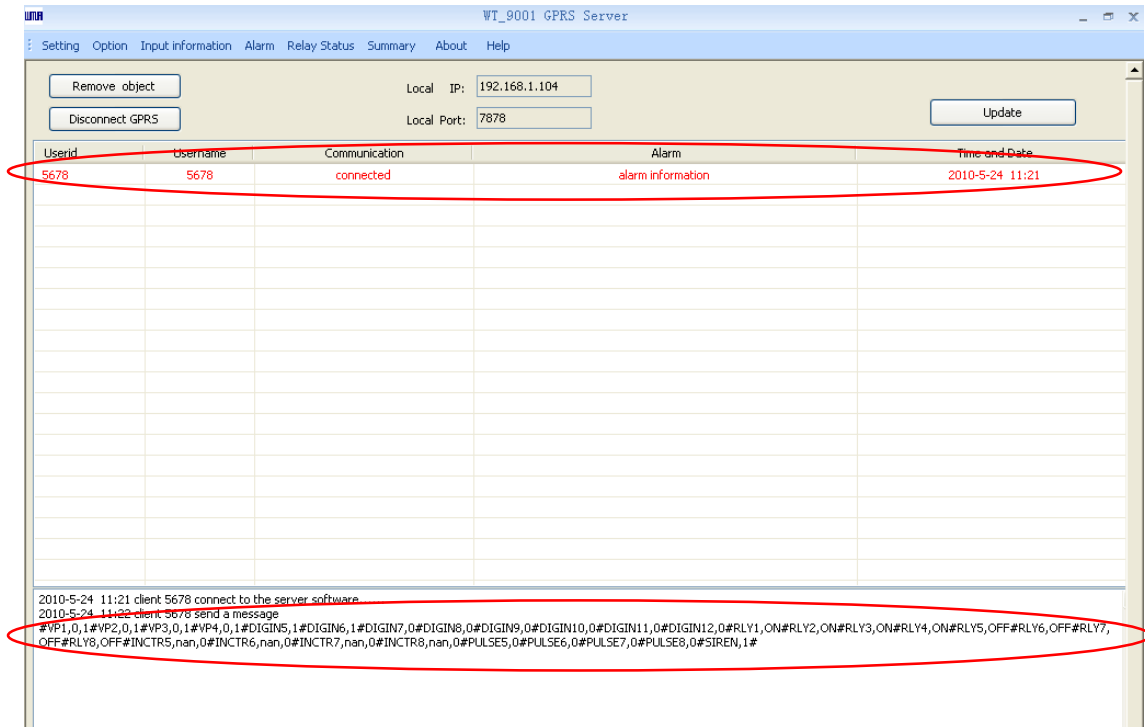
To permanently disconnect the WT-9001 device from the software, you can select the WT-9001 device in the list and press the “Disconnect GPRS” button. The system will then prompt you to enter Administrator ID and password for confirmation.



Note: Permanently disconnect the WT-9001 device from the list will disable the GPRS function of the WT-9001 device. You can enable the GPRS function anytime by sending it a text command.

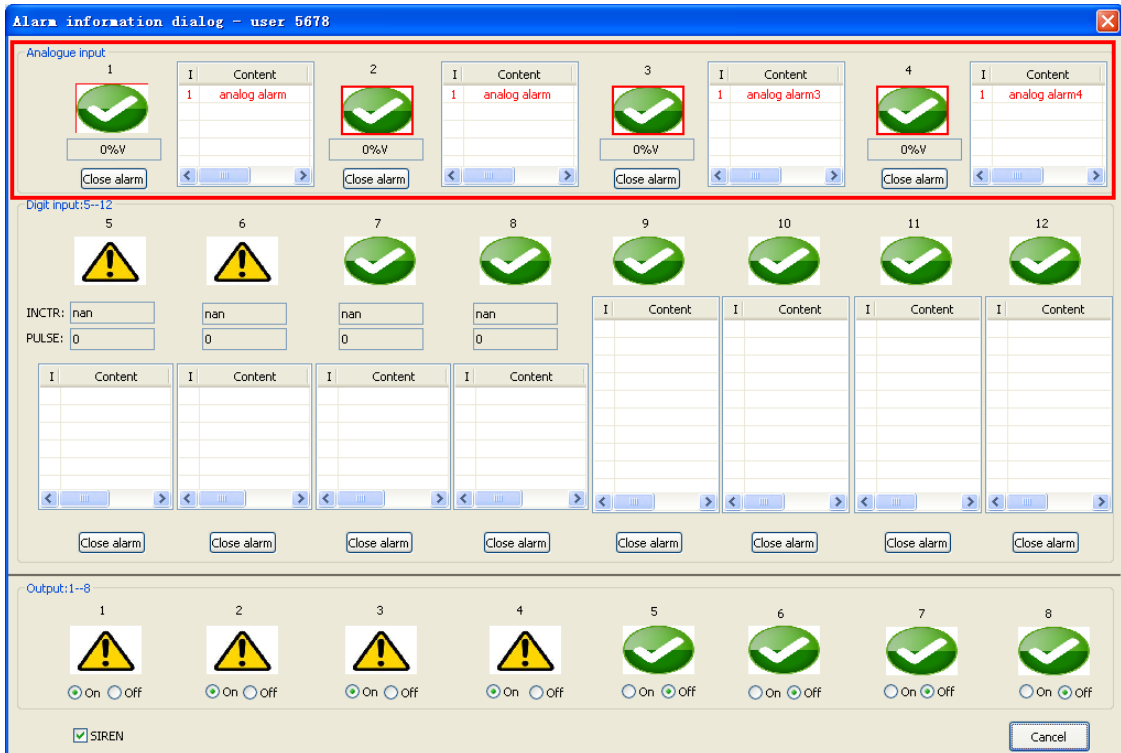
Step 11: Receiving Alarms from the WT-9001 Device

When there is an alarm event from the WT-9001 device, a red wording will be indicated at the Alarm tab of WT_9001 GPRS software as shown below.

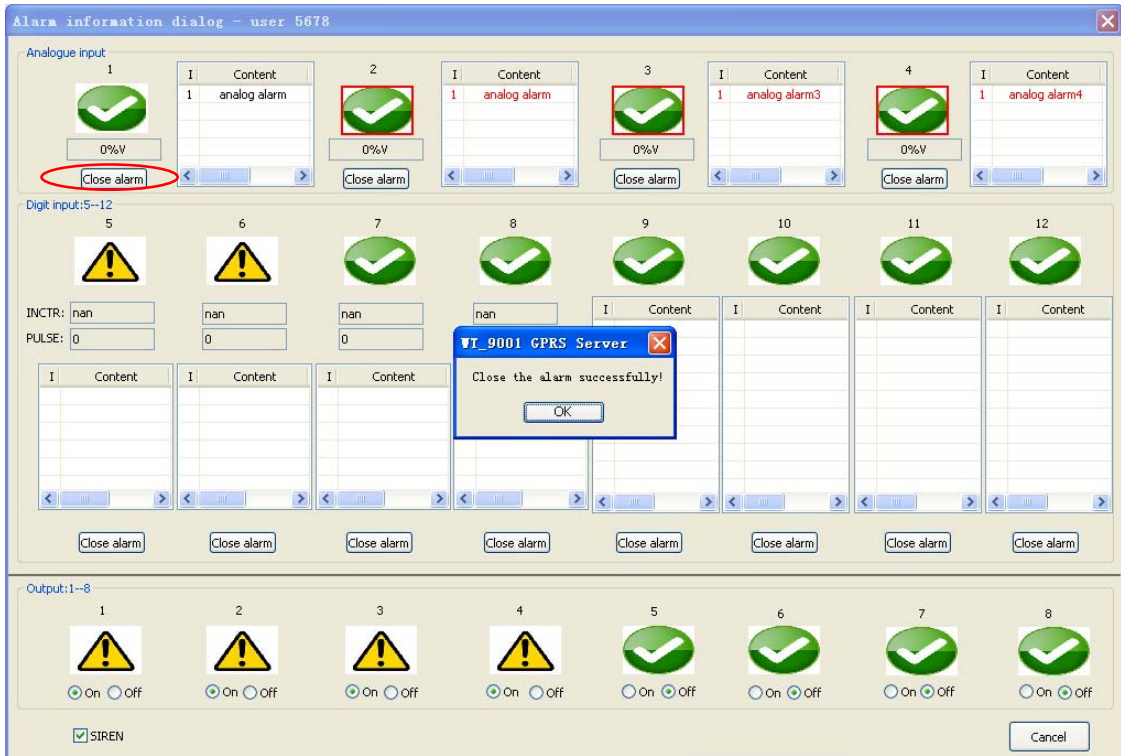


Note: The WT-9001 device will send all its status to the GPRS software every 20 seconds. You can always press the “Update” button to upload its status from the WT-9001 device anytime.

Simply double click the “alarm information” for alarm details as shown below.

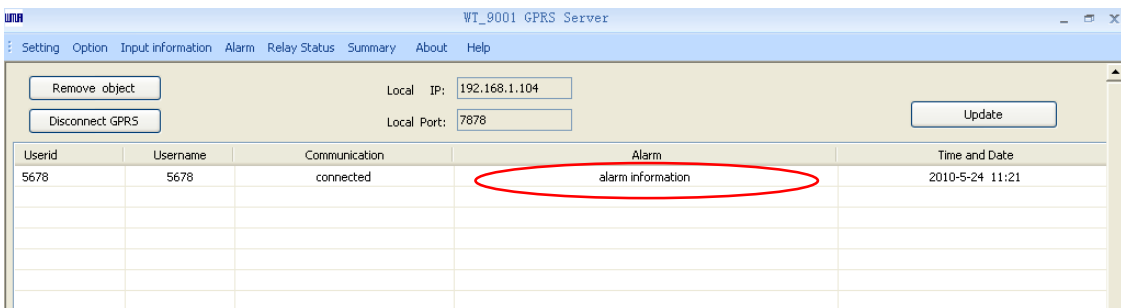


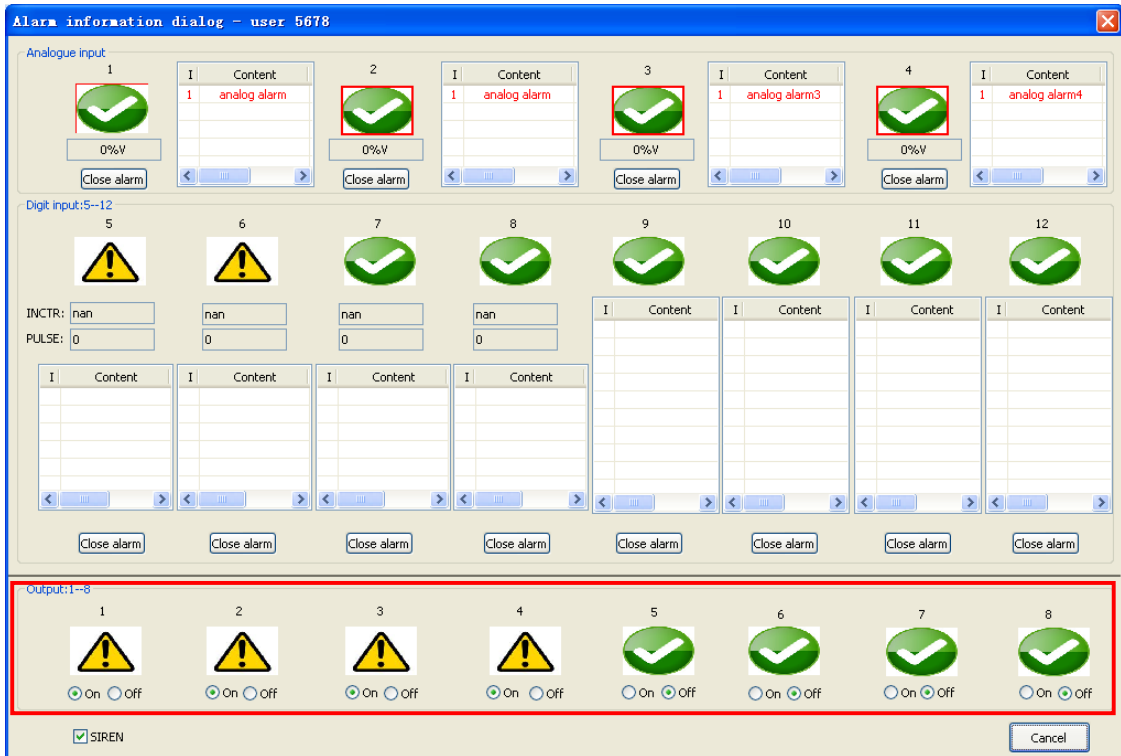
For the example above, Analogue Input 1, 2, 3 and 4 have triggered. The icon will keep on blinking continuously until it received a confirmation by clicking Close Alarm button.



Step 12: Activate the Output Relays

To activate the output relay of the WT-9001 device, simply double click the connected device from the list to bring up the status window as shown below

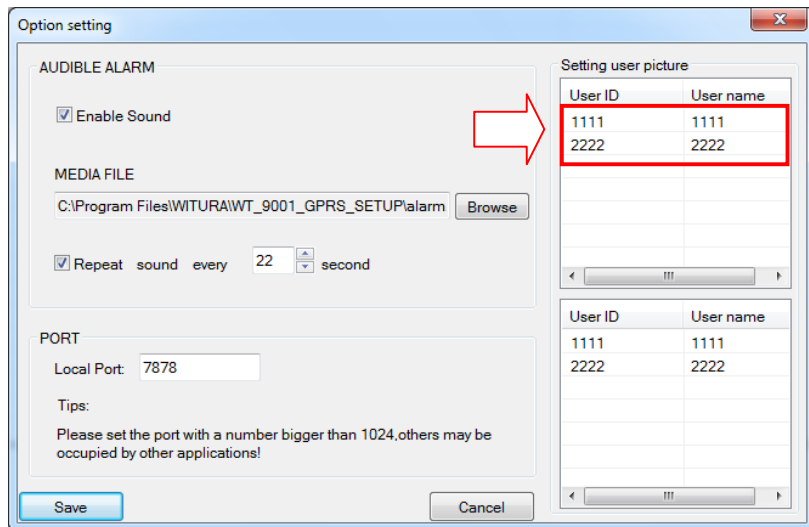


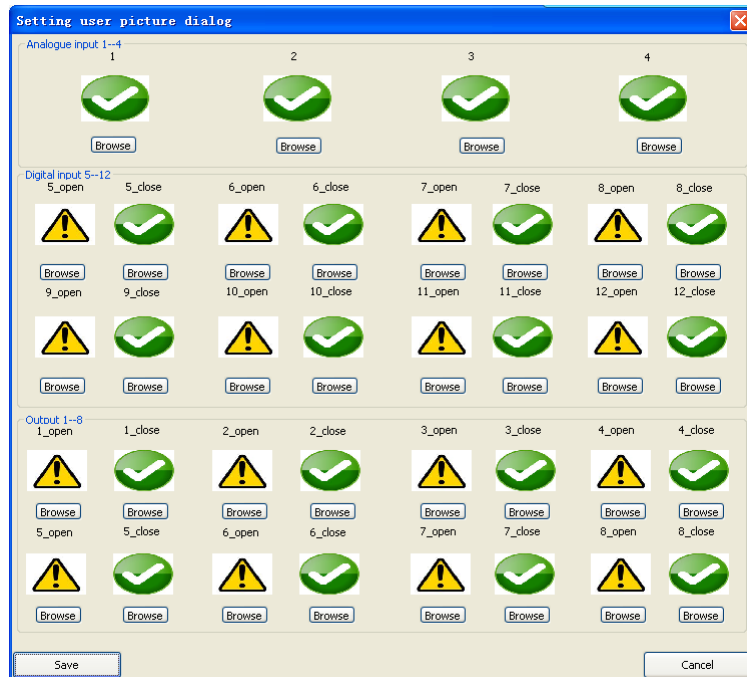


Simply select "on" to turn on the output relay or "off" to turn off

Step 13: Editing the Alarm Description and Picture Icons of Alarm Details

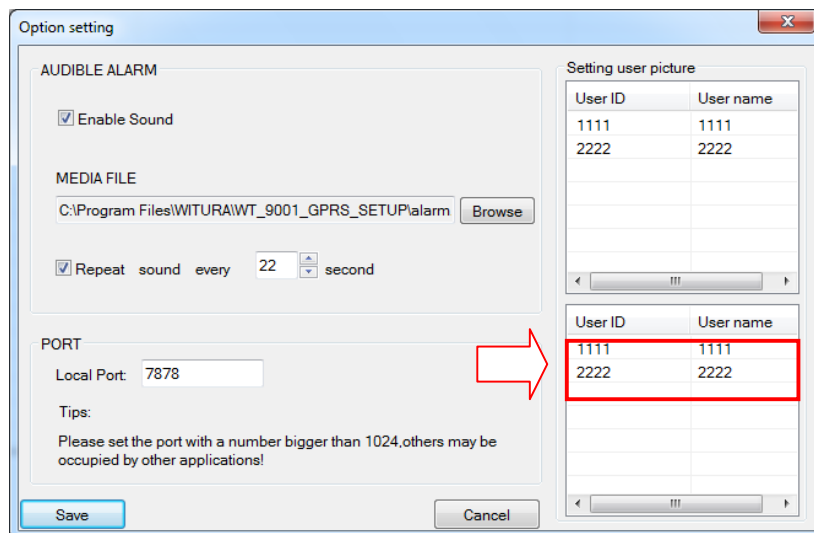
It is possible to change the display icon of alarms according to your desire. To change the display icons you can go to "Option" menu and double click on the users at the Setting user picture tab as shown below.

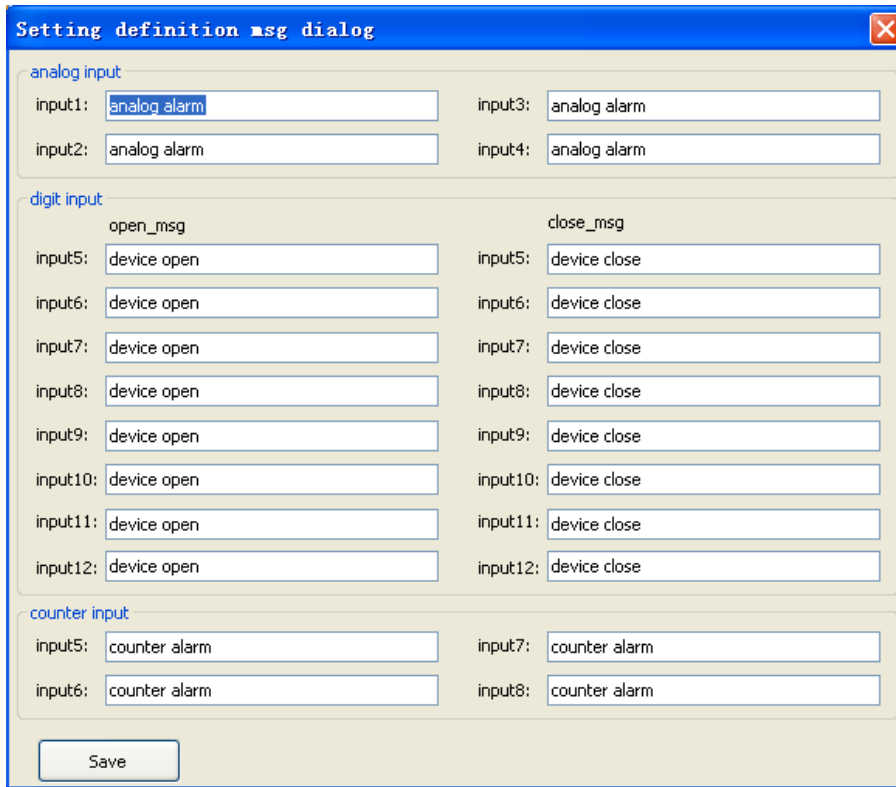




Please note that there are 2 icons for each digital input, the first display icon represents the digital input triggers at high pulse and the second display icon represents the digital input triggers at no pulse. After adding the display pictures simply press "OK" button to save.

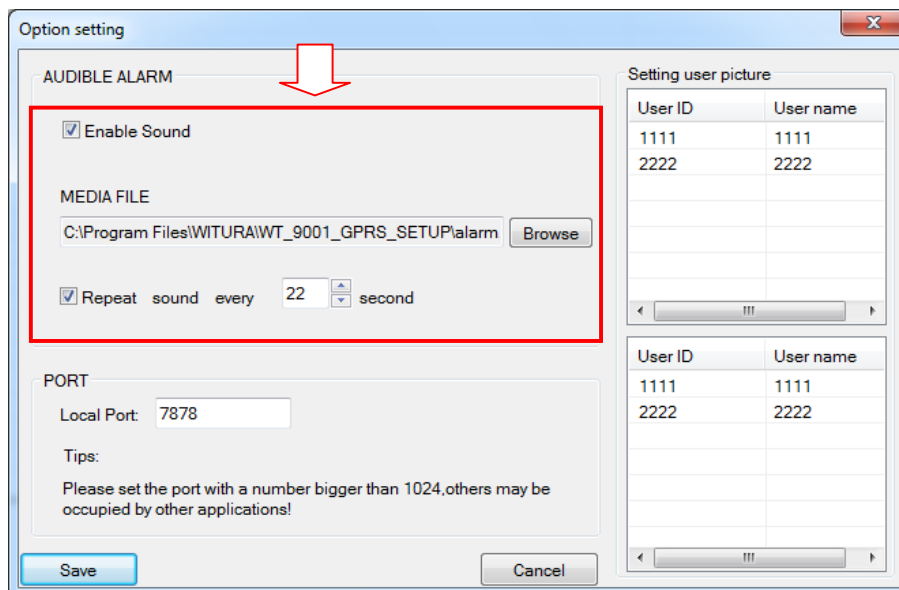
To change the alarm messages or descriptions, double click on the users at the Setting user picture tab as shown below.





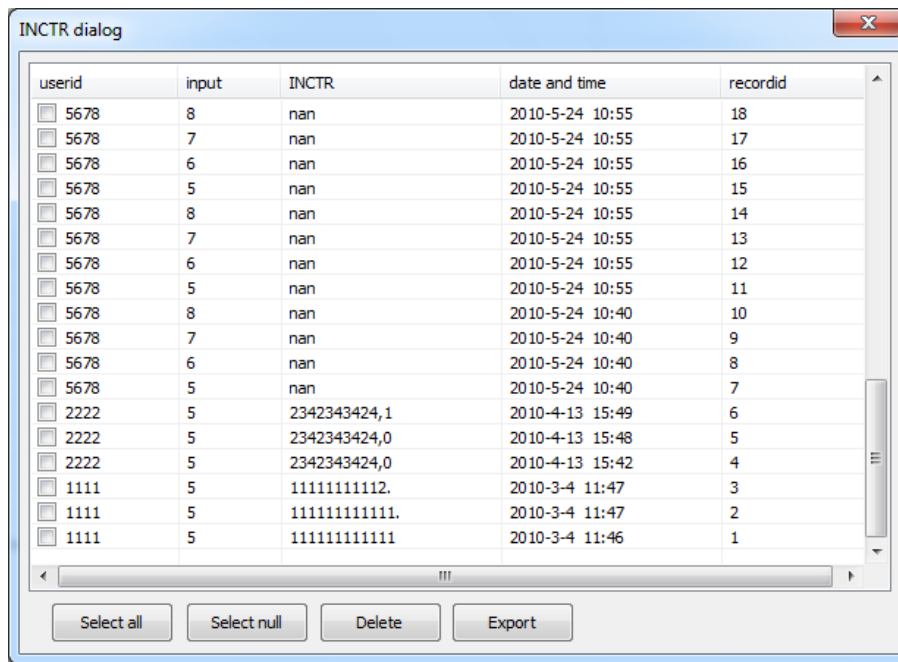
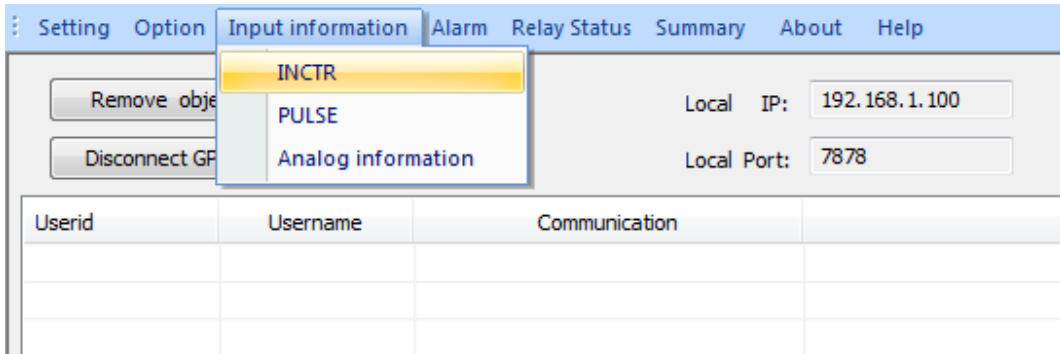
After setting the software will display these messages when the inputs changes state.

You are also able to change the alarm sound by adding a new media file. Audible alarm will sound when you received incoming alarm events from the WT-9001 devices.



Step 14: Checking the Digital Input Counter Report

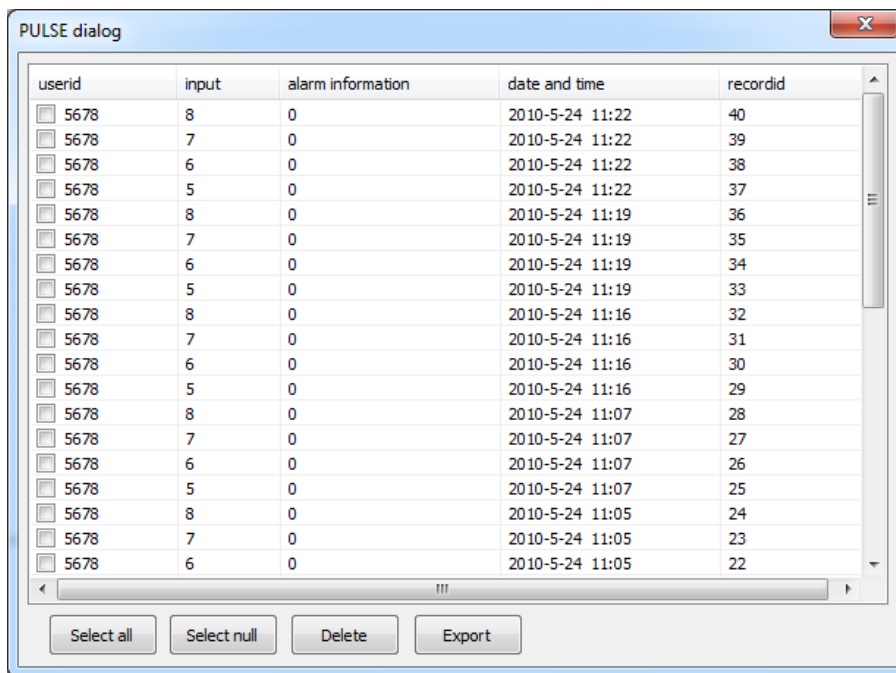
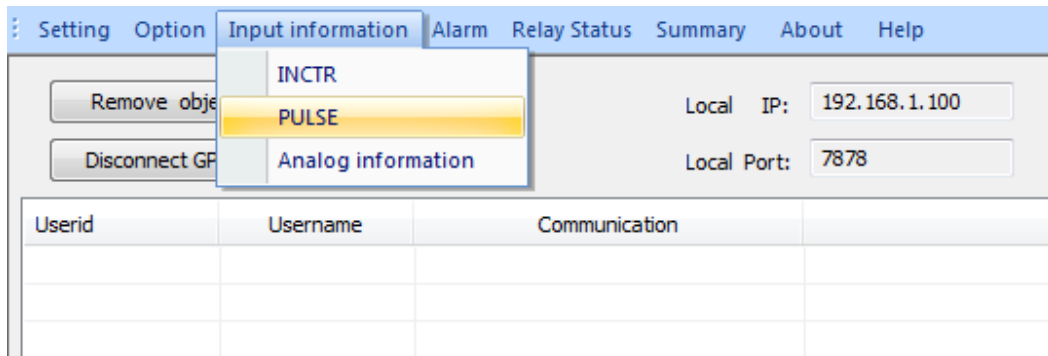
To check the Digital Input Counter Report, simply go to the **“Input information”** menu and press **“INCTR”**



To delete the reports, you can manually select the reports by ticking the check box or press the **“Select all”** button to select all the reports and press the **“Delete”** button to delete. To export the reports to Excel file simply press the **“Export”** button.

Step 15: Checking the Digital Input Pulse Counter Report

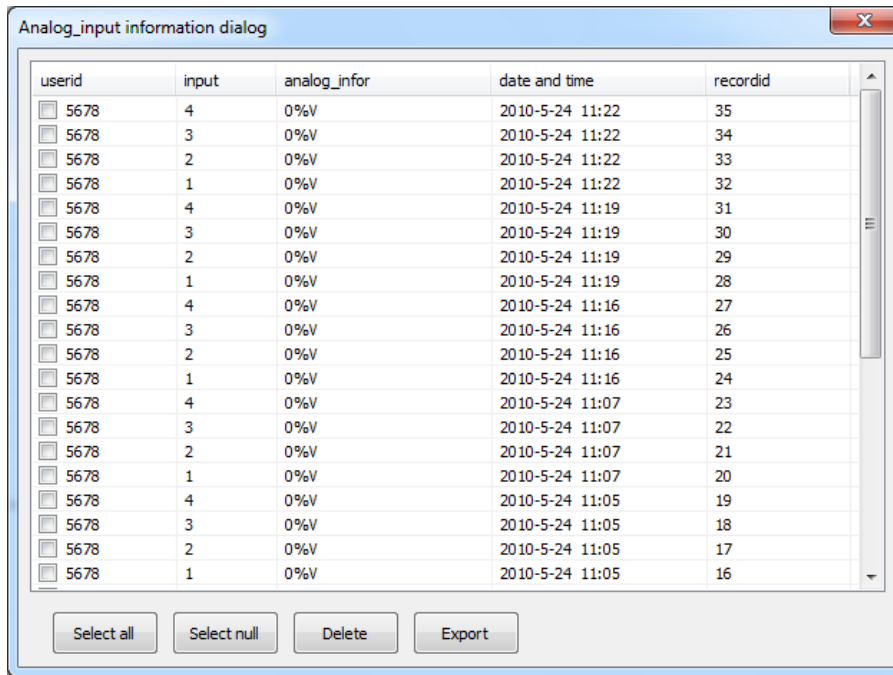
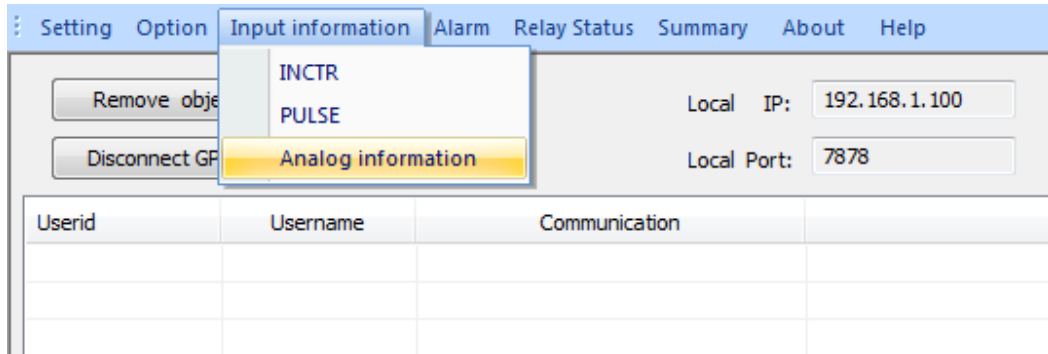
To check the Digital Input Pulse Counter Report, simply go to the **“Input information”** menu and press **“PULSE”**



To delete the reports, you can manually select the reports by ticking the check box or press the **"Select all"** button to select all the reports and press the **"Delete"** button to delete. To export the reports to Excel file simply press the **"Export"** button.

Step 16: Checking the Analog Input Details

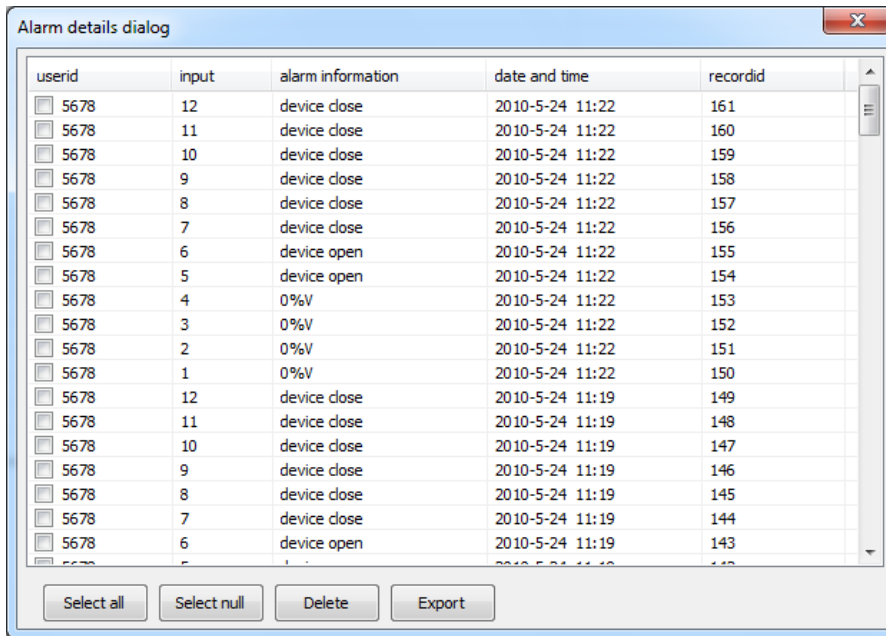
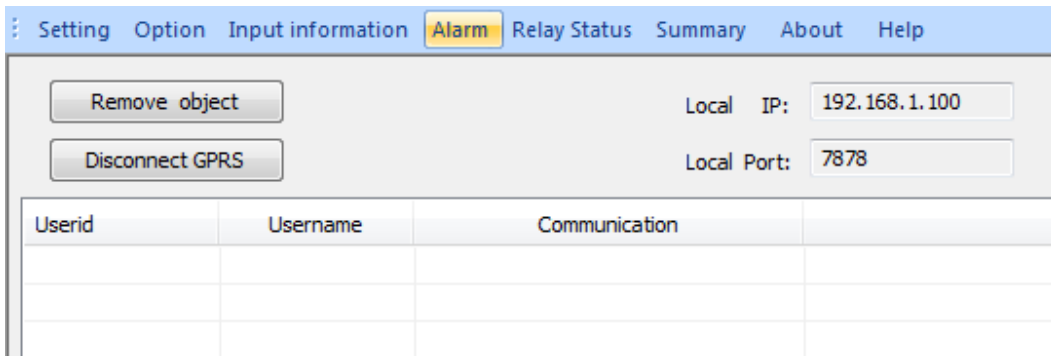
To check the Analog Input Details, simply go to the **"Input information"** menu and press **"Analog information"**



To delete the reports, you can manually select the reports by ticking the check box or press the **“Select all”** button to select all the reports and press the **“Delete”** button to delete. To export the reports to Excel file simply press the **“Export”** button.

Step 17: Checking the Inputs Alarm Details

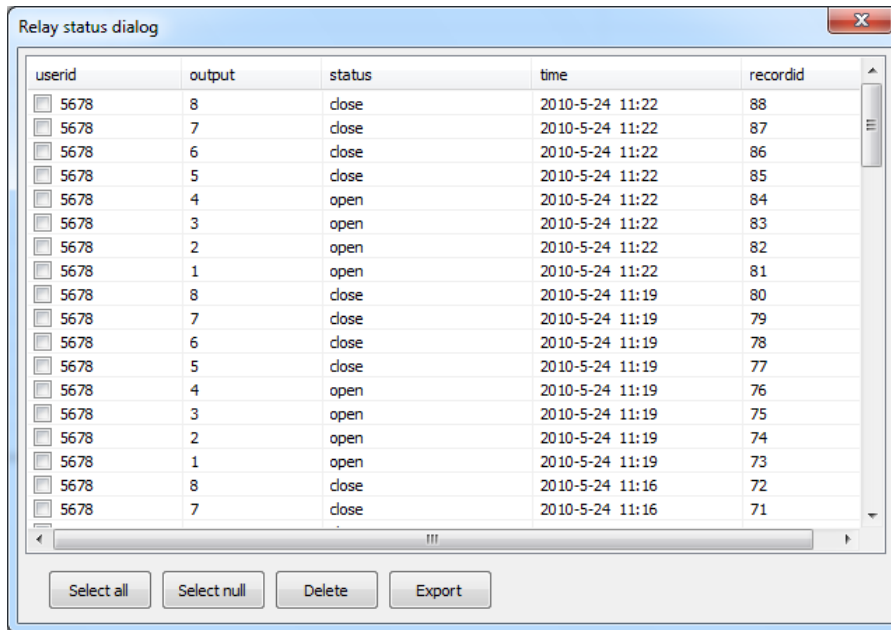
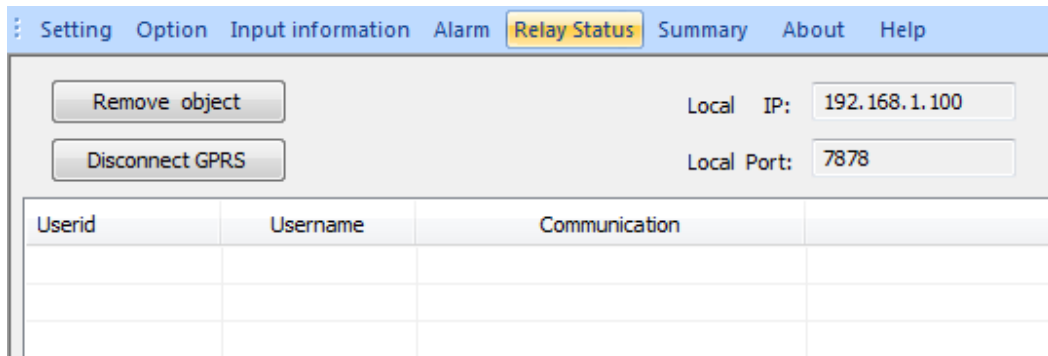
To check the Inputs Alarm Details, simply press the **“Alarm”** menu



To delete the reports, you can manually select the reports by ticking the check box or press the **“Select all”** button to select all the reports and press the **“Delete”** button to delete. To export the reports to Excel file simply press the **“Export”** button.

Step 18: Checking the Output Relay Status Report

To check the Output Relay Status Report, simply press the **“Relay Status”** menu.



To delete the reports, you can manually select the reports by ticking the check box or press the "Select all" button to select all the reports and press the "Delete" button to delete. To export the reports to Excel file simply press the "Export" button.

Step 19: View the Summary Details of Each User

To view the Summary Details, simply go to the "Summary" menu and press "user detailed table"

Client 5678's summary details

Input information		
alarm details		
Input	Content	Time
12	device close	2010-5-24 11:22
11	device close	2010-5-24 11:22
10	device close	2010-5-24 11:22
9	device close	2010-5-24 11:22
8	device close	2010-5-24 11:22
7	device close	2010-5-24 11:22
6	device open	2010-5-24 11:22

analog details		
Input	Analog	Time
4	0%V	2010-5-24 11:2
3	0%V	2010-5-24 11:2
2	0%V	2010-5-24 11:2
1	0%V	2010-5-24 11:2
4	0%V	2010-5-24 11:1
3	0%V	2010-5-24 11:1
2	0%V	2010-5-24 11:1

inctr details		
Input	Inctr	Time
8	nan	2010-5-24 11:22
7	nan	2010-5-24 11:22
6	nan	2010-5-24 11:22
5	nan	2010-5-24 11:22
8	nan	2010-5-24 11:19
7	nan	2010-5-24 11:19
6	nan	2010-5-24 11:19

pulse details		
Input	Pulse	Time
8	0	2010-5-24 11:2
7	0	2010-5-24 11:2
6	0	2010-5-24 11:2
5	0	2010-5-24 11:2
8	0	2010-5-24 11:1
7	0	2010-5-24 11:1
6	0	2010-5-24 11:1

Relay information		
Output	Status	Time
8	close	2010-5-24 11:22
7	close	2010-5-24 11:22
6	close	2010-5-24 11:22
5	close	2010-5-24 11:22
4	open	2010-5-24 11:22
3	open	2010-5-24 11:22
2	open	2010-5-24 11:22
1	open	2010-5-24 11:22

Step 20: Logout from the System

To logout from the system, simply click the X button on the top right.