

GSM/GPRS Wireless Modem

WT-211

User's Manual



Contents

Interface for WT-211 Wireless Modem.....	2
LED Indicator for WT-211 Wireless Modem.....	2
Installing SIM Card.....	2
Install and start the WT-211.....	3
Test the connection of PC and Wireless Modem.....	3
Data Connectivity for GPRS.....	5

Interface of Wireless Modem

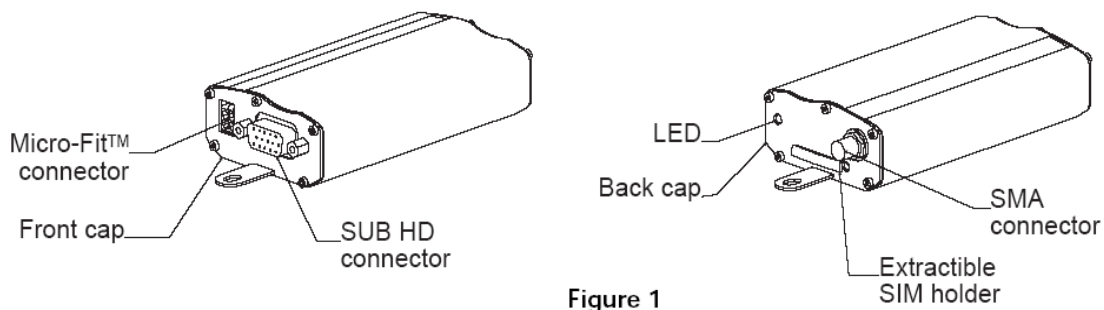


Figure 1

Description Of The Interfaces

The modem comprises of several interfaces:

- LED function indicating operating status
- External antenna (via SMA)
- Serial and control link (via 15 pins SUB D)
- Power supply (via 4 pins Micro-Fit™)
- Extractible SIM card holder

LED Indicator

- | | |
|------------------------|--|
| - LED Off | Device switched off – Not ready |
| - LED On | Device switched on – Connecting to network |
| - LED flashing slowly | Device switched on – Idle mode (registered on network) |
| - LED flashing rapidly | Device switched on – Transmission mode |

Installing SIM Card

A SIM card is needed to operate on a GSM network.

To install the SIM card:

- Press the yellow button to eject the SIM card holder. (**Note:** In order to extract or to insert the SIM card, it is necessary to press the SIM card holder ejector with a sharp element – a pen for example)
- Insert the SIM card.
- Check that it fits into place correctly.

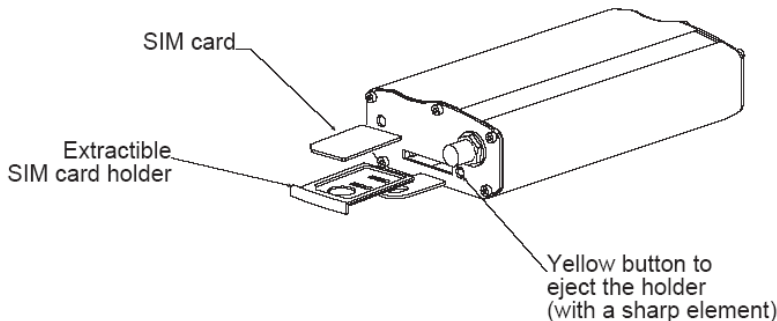


Figure 2

Install and Start the WT-211

Step 1: Connect PC and Modem: Connect the “15-pin SUB D” port of wireless modem and PC’s serial port with standard cable provided.

Step 2: Install antenna: Screw on antenna.

Step 3: Install SIM card according to “Installing SIM Card”

Step 4: Start wireless modem: Connect the 4 pins Micro-Fit™ power adapter to the wireless modem, the LED indicator (Network) flashes. About 20 seconds later, the wireless modem finishes login and the LED indicator (Network) flashes once every 3 seconds. The WT-211 is ready for wireless communication through GSM network.

Test the connection of PC and Wireless Modem

1. Set up HyperTerminal

Enter HyperTerminal in Window XP or Window 2000 according to the following order:

“Start” → “Programs” → “Accessories” → “Communications” → “HyperTerminal”

If “HyperTerminal” has not been setup, the following will display.



Figure 3

Input the name of the connection to be established, e.g. “ABC” as shown in Figure 3. Press “OK” and the dialogue box for serial port selection is shown in Figure 4.



Figure 4

Select the PC’s serial port that has connected to wireless modem, such as “COM1”. Press “OK” to enter port settings. The following dialogue box should appear.

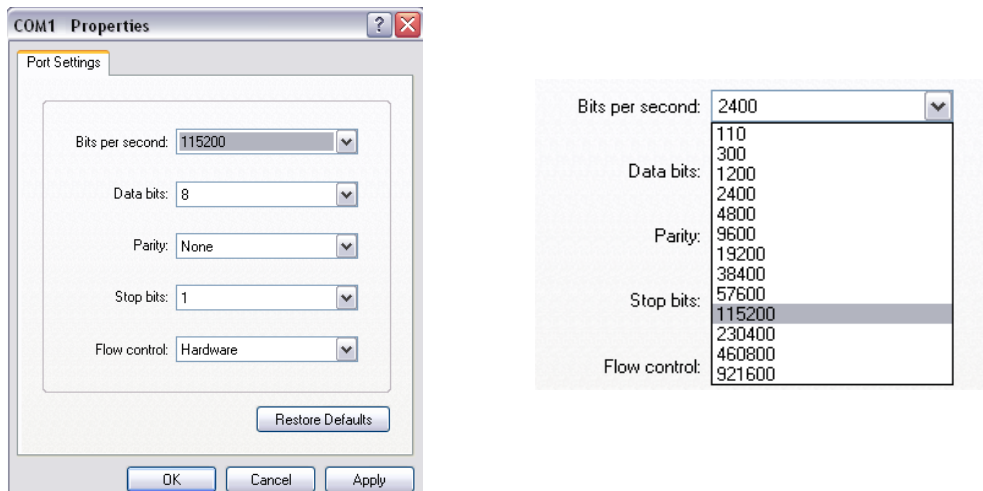


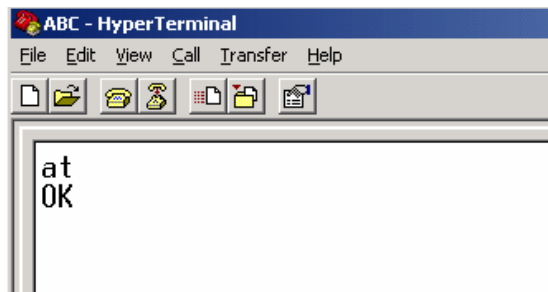
Figure 5

Select baud rate (i.e., Bits per second) for wireless Modem is 115200 with data byte of 8 and stop byte of 1 as shown in **Figure 5**. Press “OK” and the main interface of HyperTerminal appears.

Note: please make sure PC’s serial port has not been engrossed by other application. If it has been, please close the application or select the other serial port.

2. Test connection of serial port and Wireless Modem. Input AT command “at” and press “Enter” if “OK” is responded then the connection is ok. Otherwise, reset the connection as the above process

Figure 6



Data Connectivity for GPRS

Before data connectivity for GPRS, please make sure the modem is ready for work as a wireless modem. While modem is ready for GPRS, it is working in data mode.

Installation using Window XP

Before entering into data mode, ensure that the WT-211 wireless modem is power up in according to the Install and Start the WT-211 section of the user's manual.

Using the data cable supplied, connect into "15-pin SUB D" connector of the WT-211 and into the serial port of your computer.

Stage 1: Manual Installation

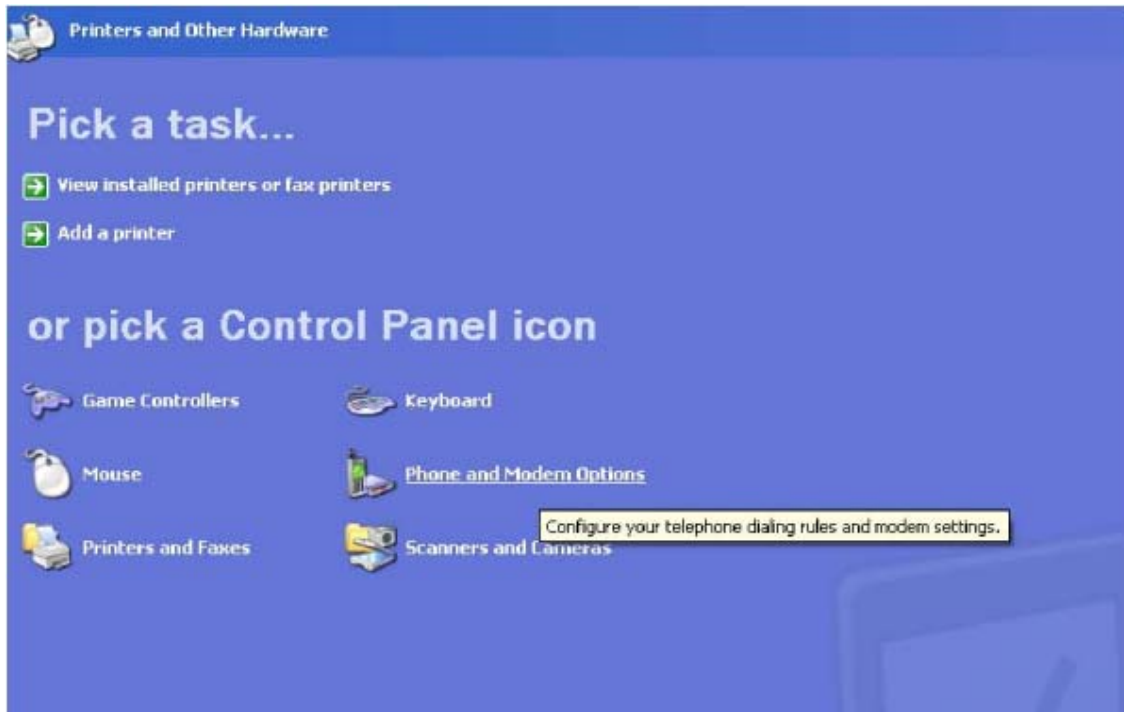


Figure 7

From the control panel, double click on "**Phone and the Modem Option**".

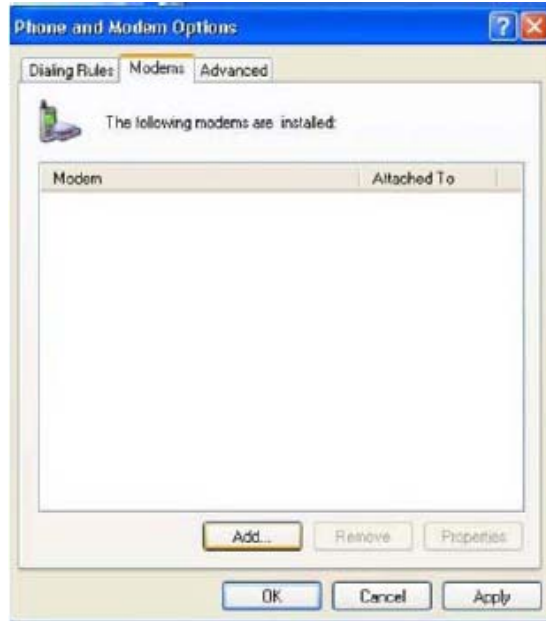


Figure 8

Select “Modem” Tab.

Click on “Add”.

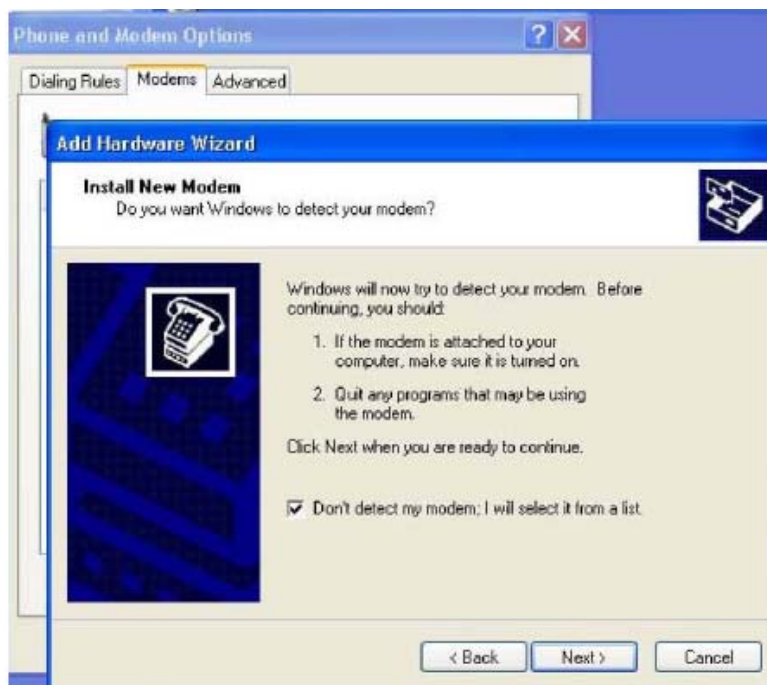


Figure 9

Select “Don’t detect my modem; I will select it from a list” and then click on “Next”.

After a short while the following screen should appear.

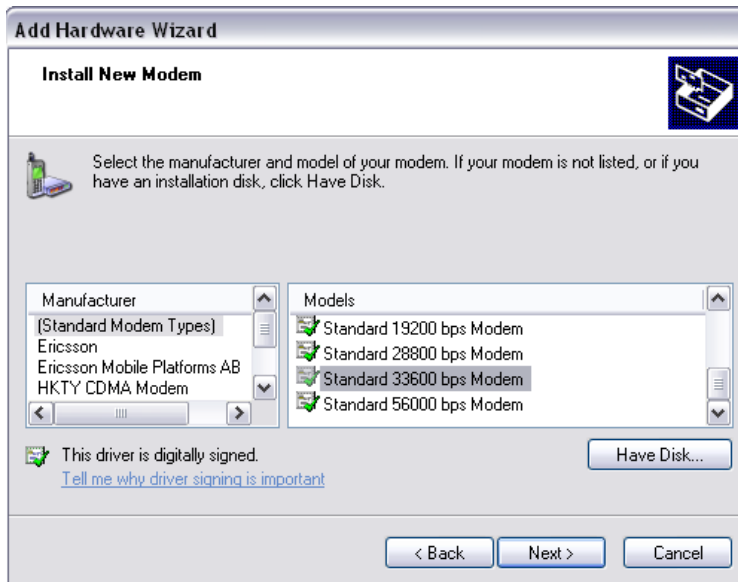


Figure 10

Select “**Standard 33600bps Modem**” and then Click on “**Next**”

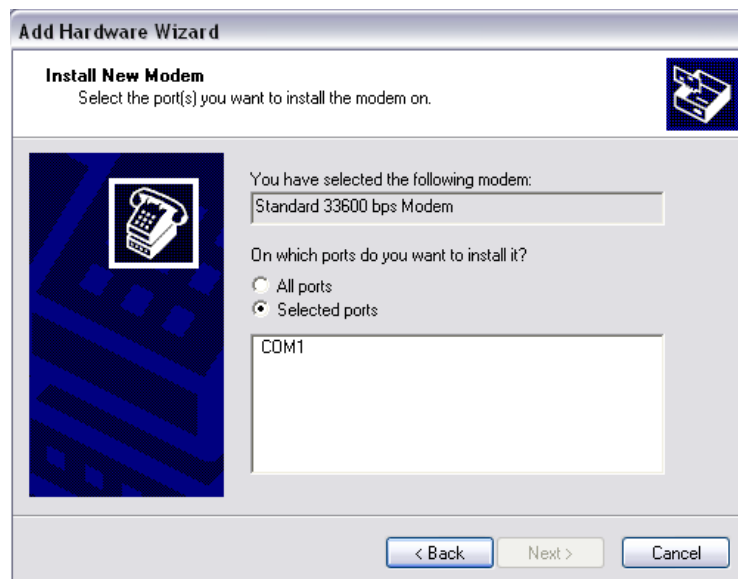


Figure 11

Select the connected port, and then click on “**Next**”.
After a few minutes, the following screen will appear.



Figure 12



Figure 13

Click on “**Finish**”.

The following screen will appear.

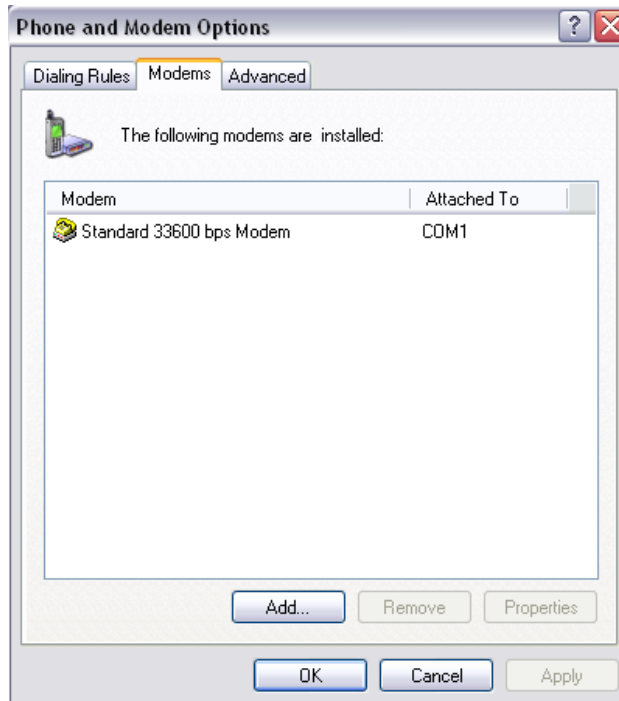


Figure 14

Select the “Modem” tab and click on “Properties”.

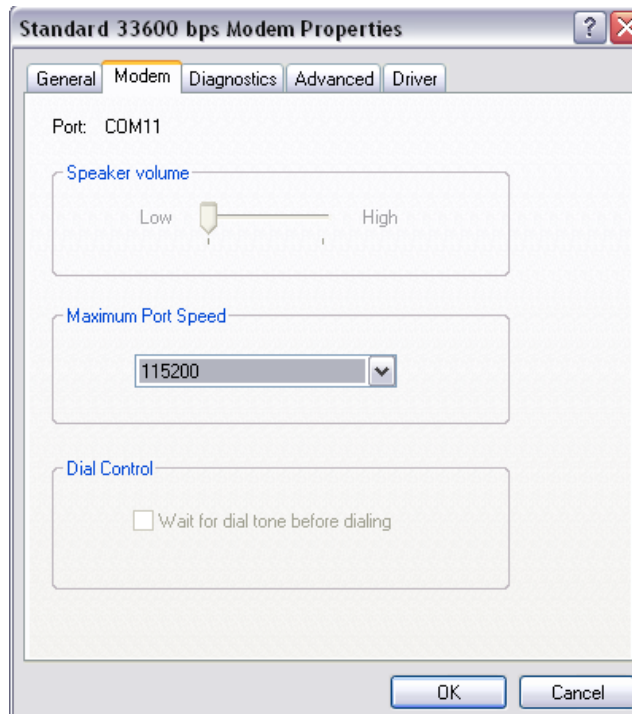


Figure 15

Select a value for “Maximum Port speed” as 115200.

Click on “OK”.

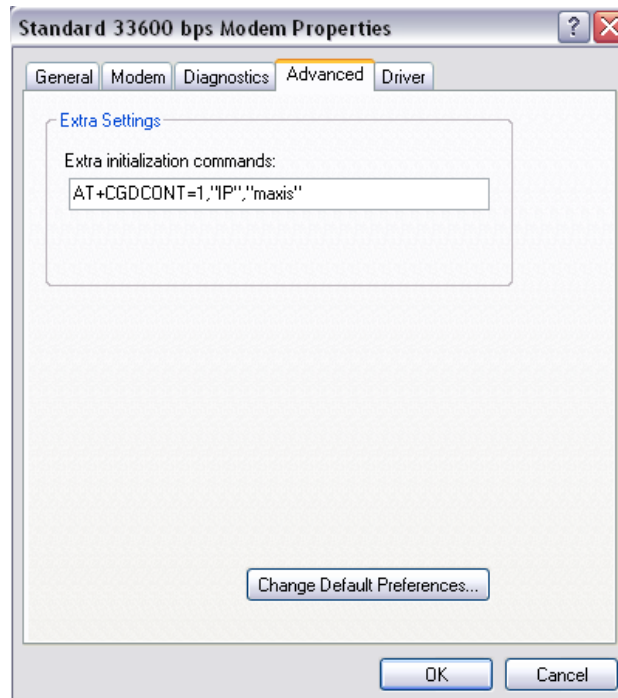


Figure 16

Select “Advanced” tab. Enter “Extra initialization commands” as **AT+CGDCONT=1, “IP”, “*”**

* depend on service provider for GPRS. Example: maxis

Click on “OK”.

Stage 2: Testing the Modem Connection

Select the “Diagnostics” tab.

Click on “Query Modem”. After a few seconds the following screen should appear.

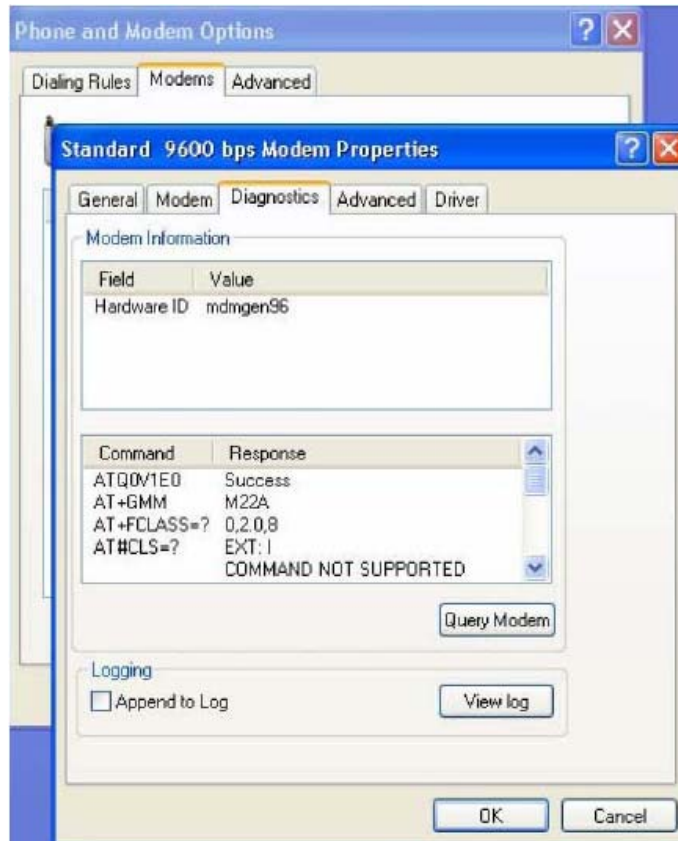


Figure 17

The screen means the modem connection is successfully.

Stage2: Connecting to the Internet

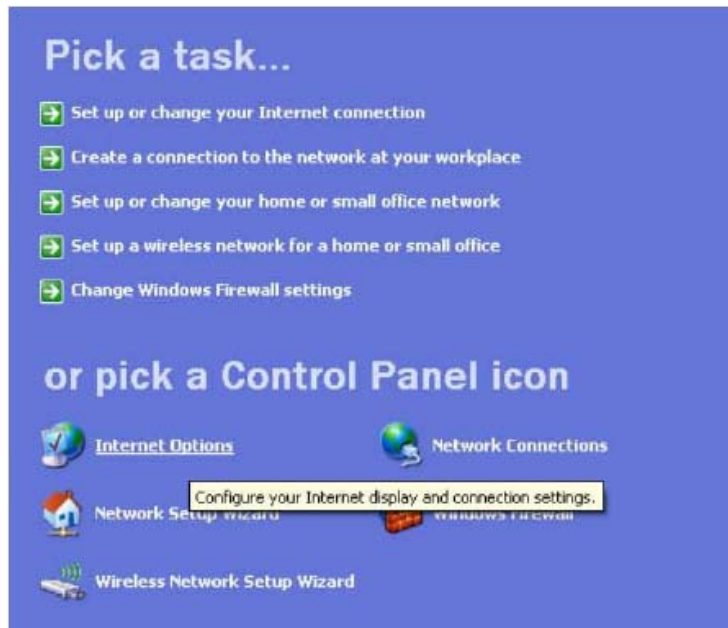


Figure 18

From the Control Panel double click on “**Internet Option**”
 The following screen will appear.



Figure 19

Select “**Connections**” and then click on “**Add**”.



Figure 20

Select “**Dial-up to private network**” option and then click on “**Next**”

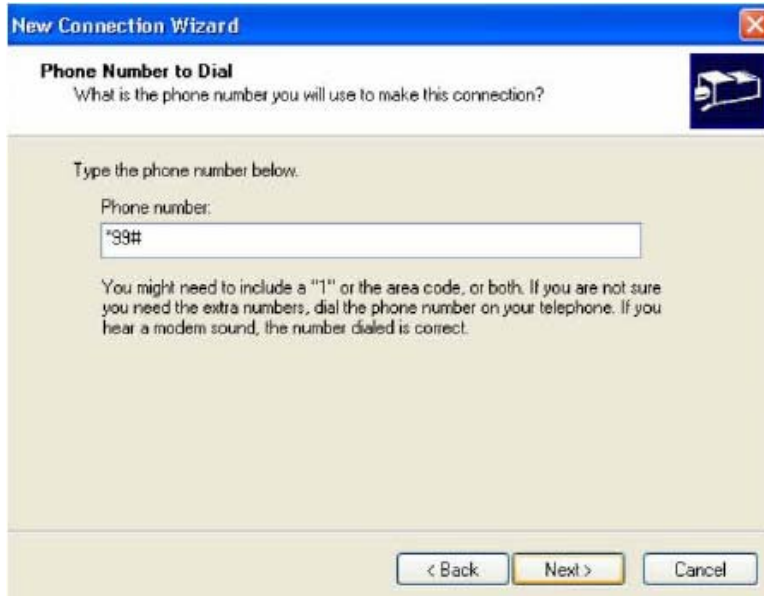


Figure 21

Key in the Phone number that provided by the service provider
Click on “Next”.



Figure 22

Enter a name or use the default one. Click “Finish”.
The following screen will appear.



Figure 23

Click “OK”.

Please change the dial-up server to “SLIP”



Figure 24

Then click the Properties of Internet Protocol



Figure 25

Put in the IP address that provided by the service provider.

You can enter corresponding characters as User name, Password and Domain and then click “OK” or Click “OK” without entering anything.

Your computer is now ready for connection to the Internet.

From the Control panel, double click on “**Network and Dial-up Connections**”.

Choose suitable connection availability from the choices provided.



Figure 26

Click on “Dial”.

When on-line, there is a computer icon in the bottom right of the screen.

Note: If the telephone handset is lifted, or you are making or receiving a voice call, the WT-211 wireless modem will not respond to any data commands.



Figure 27

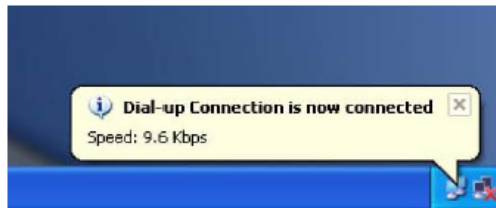


Figure 28

Stage 3: Disconnecting from the Internet

To terminate the connection, left click on the icon. The following screen will appear

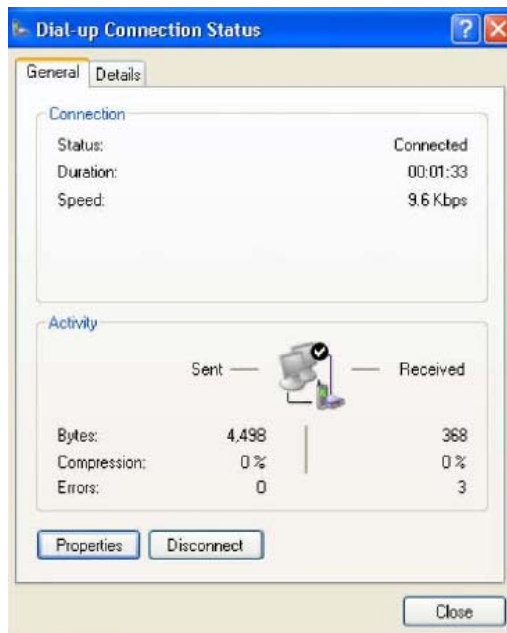


Figure 29

Click on “Disconnect”. The computer icon in the bottom right of the screen will disappear.

We try to keep our product information up-to-date and accurate. We cannot cover all specific applications or anticipate all requirements. All specifications are subject to change without notice. For more information, contact Witura Corporation Sdn Bhd.
 Phone: +604-2289053 Fax: +604-2289146
 Address: 18-8-C, Gurney Tower, Persiaran Gurney, 10250, Penang, Malaysia.